

SURVEY UNIT,

MINISTRY OF HOUSING AND ENVIRONMENT
 Ameenee Magu, Maafannu, Male', 20392, Maldives.
 Office (PABX): +(960) 3004300, Fax: +(960) 3004301
 Email: survey@mhe.gov.mv
 Web: www.mhe.gov.mv



CONTROL POINT DETAILS	Station Number PSM - 5157
Coordinate Information	
Geodetic	Grid
WGS 84	UTM Zone 43
Lat: 3° 54' 18.0648"	E: 330656.4600
Long: 73° 28' 29.3298"	N: 431782.0400
Ellp Height: -85.89	Orth Height: +1.108

Date: 22 April 2012

Monument description & method of survey:

- Monument Type A with reference to rural area used as mentioned in the guide line.
- Control stations were fixed using primary closed loop traverse around the island.
- 3 permanently marked station were fixed by GPS

General site condition & access:

Station was fixed in open areas with minimum amount of vegetation and obstacles.

Owner:

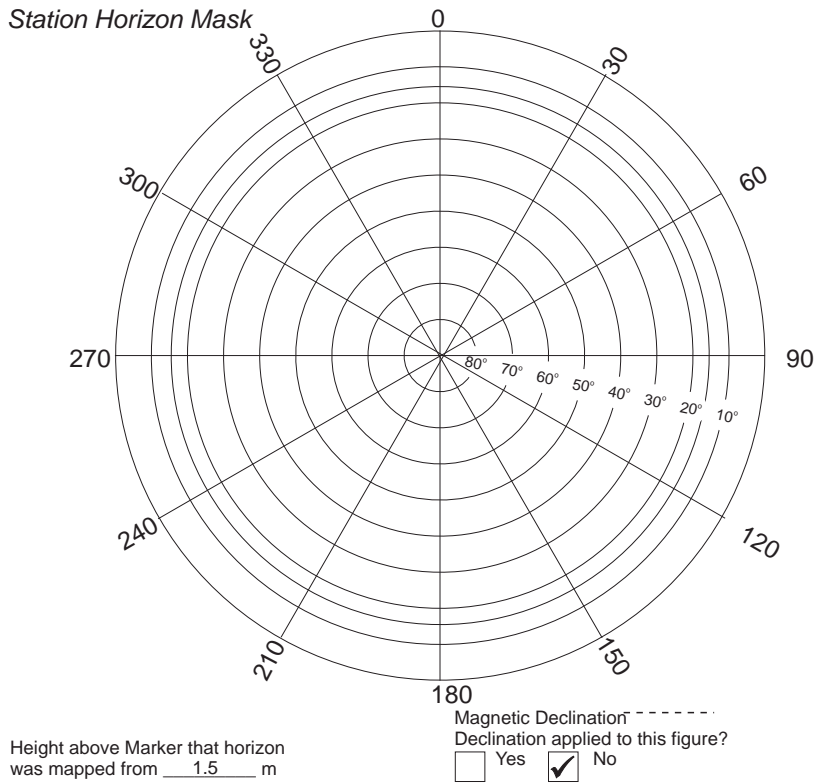


SITE INFORMATION

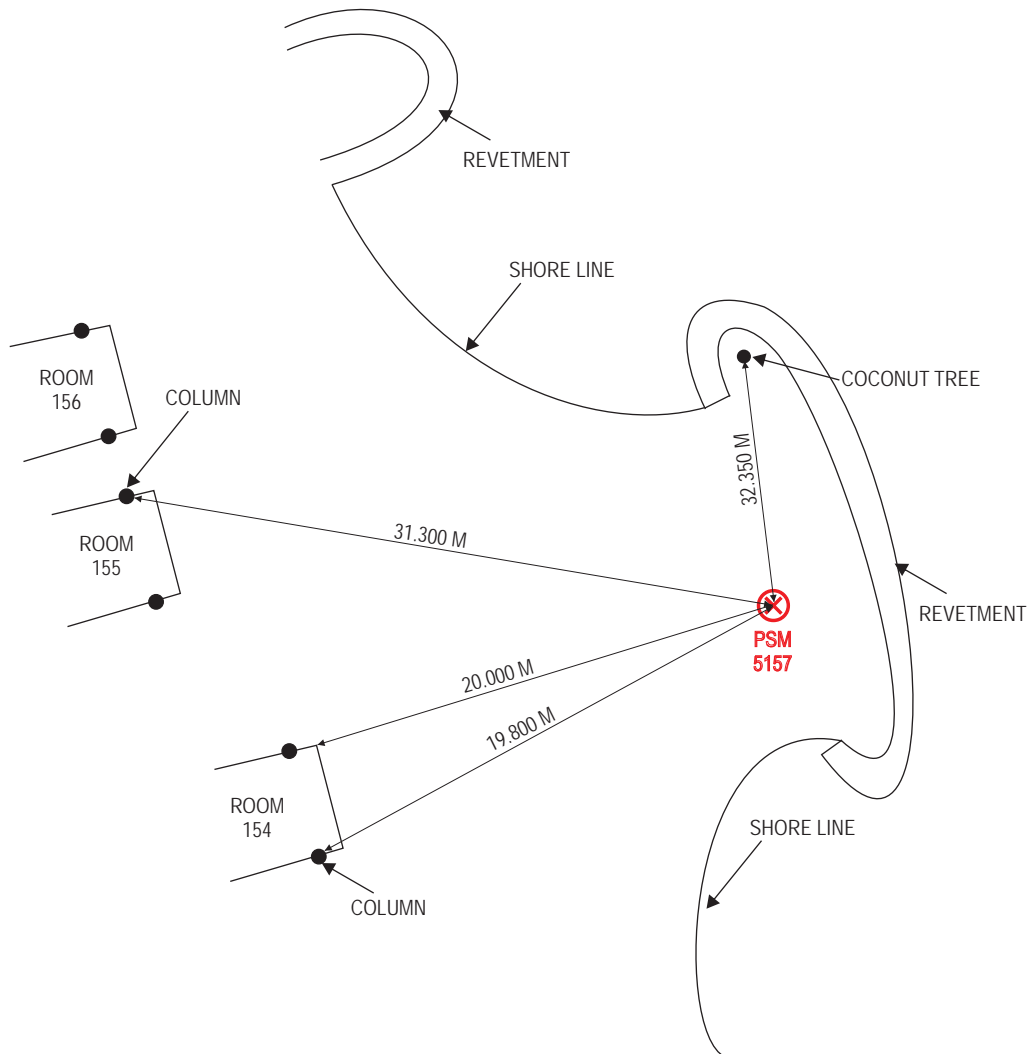
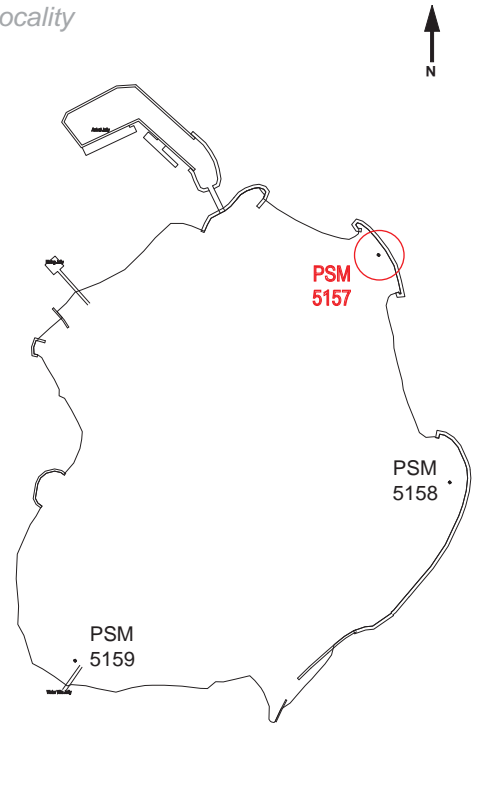
Station Number

PSM 5157

Station Horizon Mask



Locality



Sketched by: Hussain Thasmeen

Scale: Not to scale

Date: 22 Apr 2012

SURVEY UNIT,

MINISTRY OF HOUSING AND ENVIRONMENT
Ameenee Magu, Maafannu, Male', 20392, Maldives.
Office (PABX): +(960) 3004300, Fax: +(960) 3004301
Email: survey@mhe.gov.mv
Web: www.mhe.gov.mv



CONTROL POINT DETAILS	Station Number PSM 5158
Coordinate Information	
Geodetic	Grid
WGS 84	UTM Zone 43
Lat: 3° 54' 11.1996"	E: 330722.4880
Long: 73° 28' 31.4832"	N: 431571.0487
Ellp Height:	Orth Height: +1.109
Date: 22 April 2012	

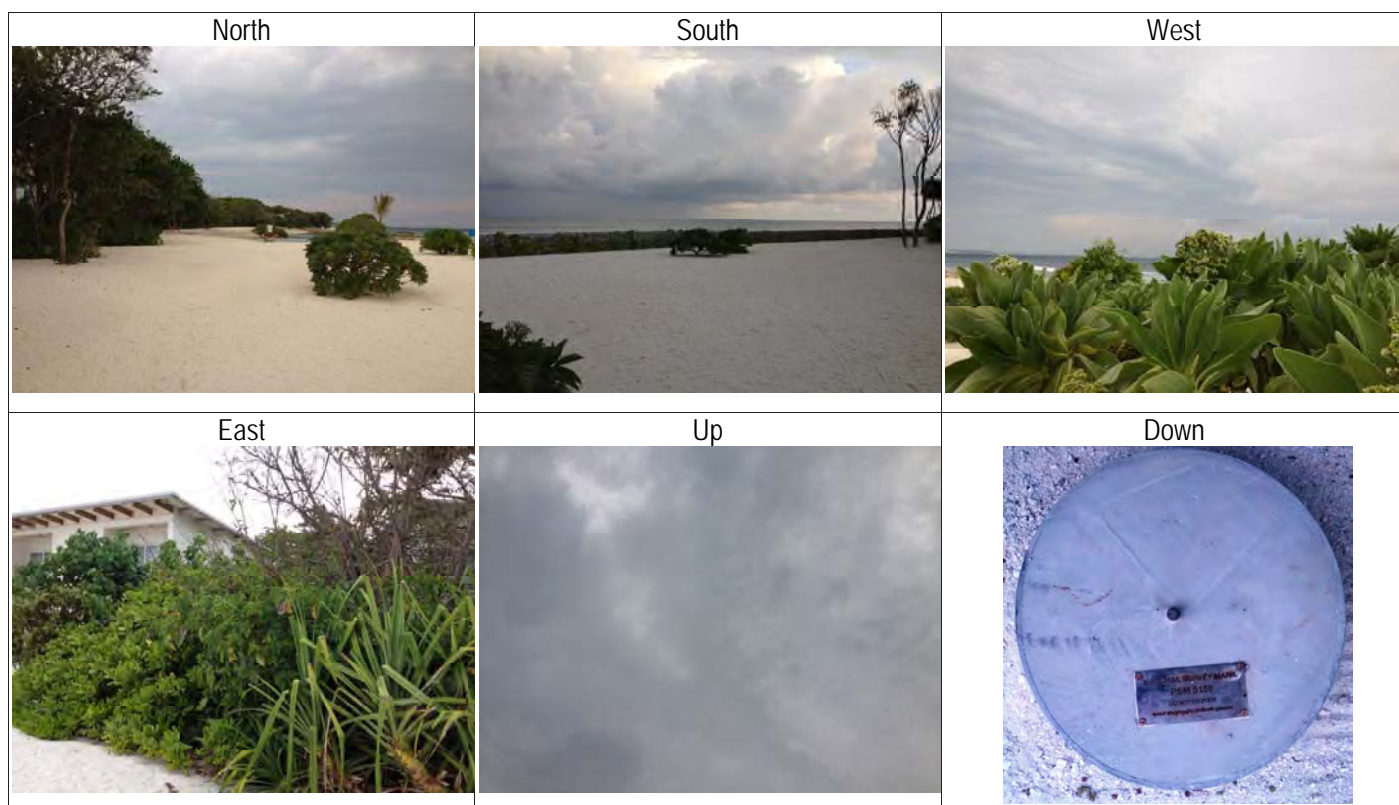
Monument description & method of survey:

- Monument Type A with reference to rural area used as mentioned in the guide line.
- Control stations were fixed using primary closed loop traverse around the island.
- 3 permanently marked station were fixed by GPS

General site condition & access:

Station was fixed in open areas with minimum amount of vegetation and obstacles.

Owner:

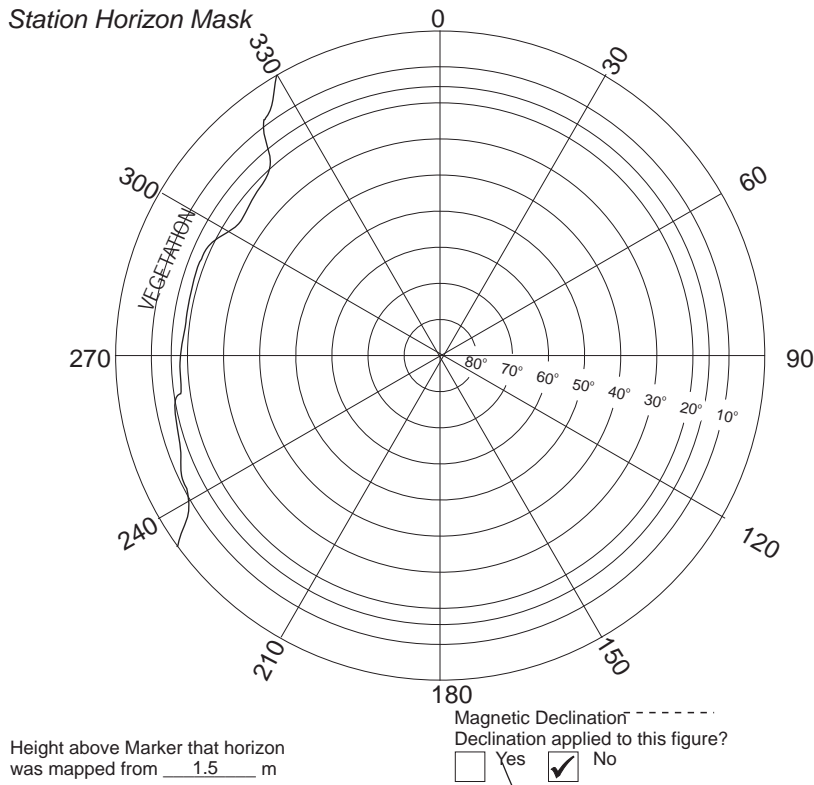


SITE INFORMATION

Station Number

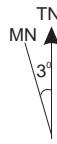
PSM 5158

Station Horizon Mask

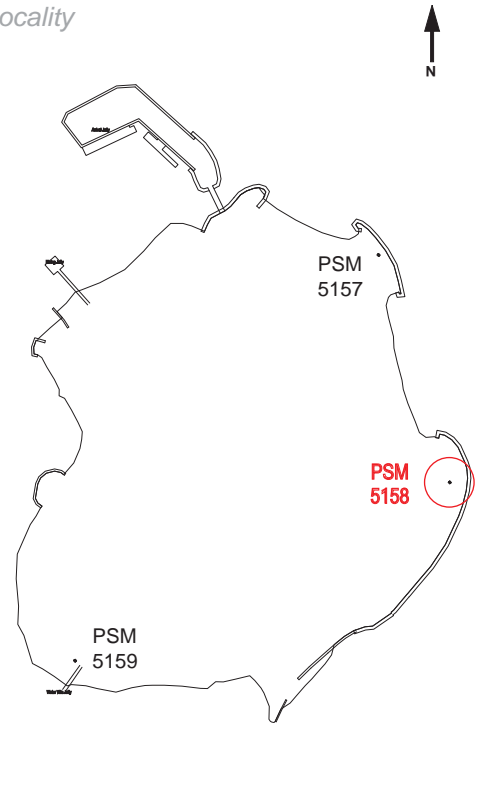


Height above Marker that horizon was mapped from 1.5 m

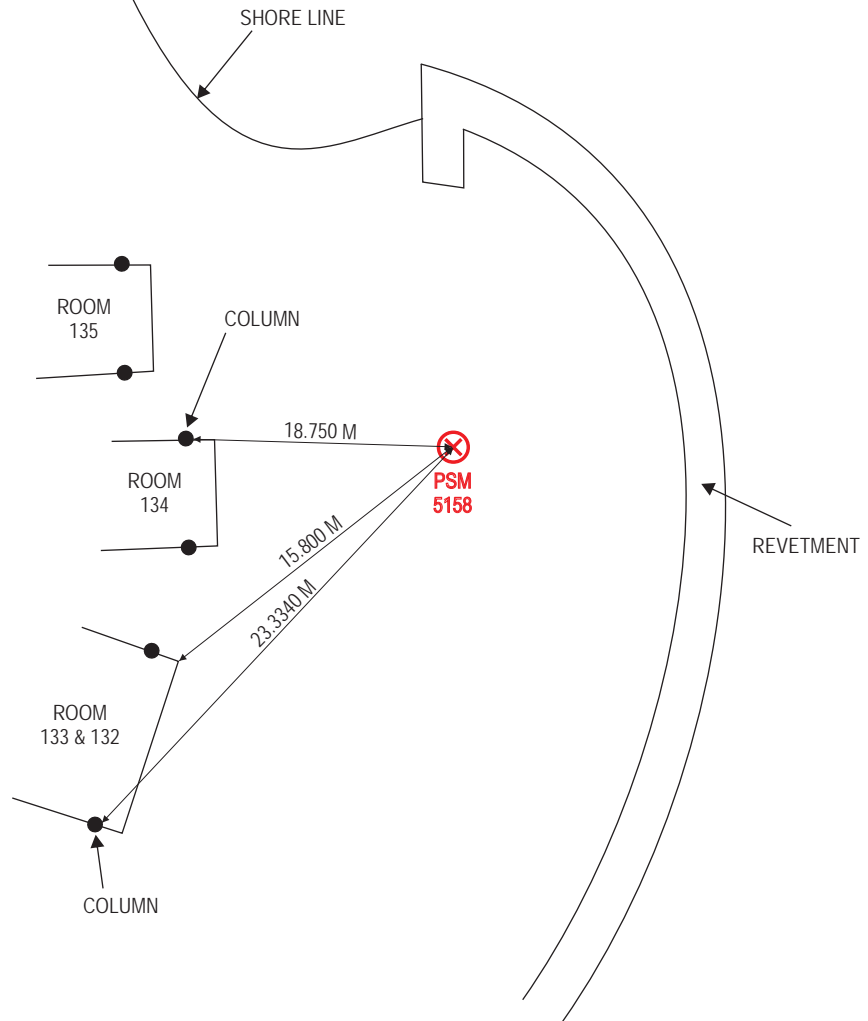
Magnetic Declination Declination applied to this figure?
 Yes No



Locality



SHORE LINE



North

Sketched by: Hussain Thasmeen

Scale: Not to scale

Date: 22 Apr 2012

SURVEY UNIT,

MINISTRY OF HOUSING AND ENVIRONMENT
 Ameene Magu, Maafannu, Male', 20392, Maldives.
 Office (PABX): +(960) 3004300, Fax: +(960) 3004301
 Email: survey@mhe.gov.mv
 Web: www.mhe.gov.mv



CONTROL POINT DETAILS	Station Number PSM 5159
Coordinate Information	
Geodetic	Grid
WGS 84	UTM Zone 43
Lat: 3° 54' 5.7924"	E: 330374.9264
Long: 73° 28' 20.2254"	N: 431405.6586
Ellp Height:	Orth Height: +1.034
Date: 22 April 2012	

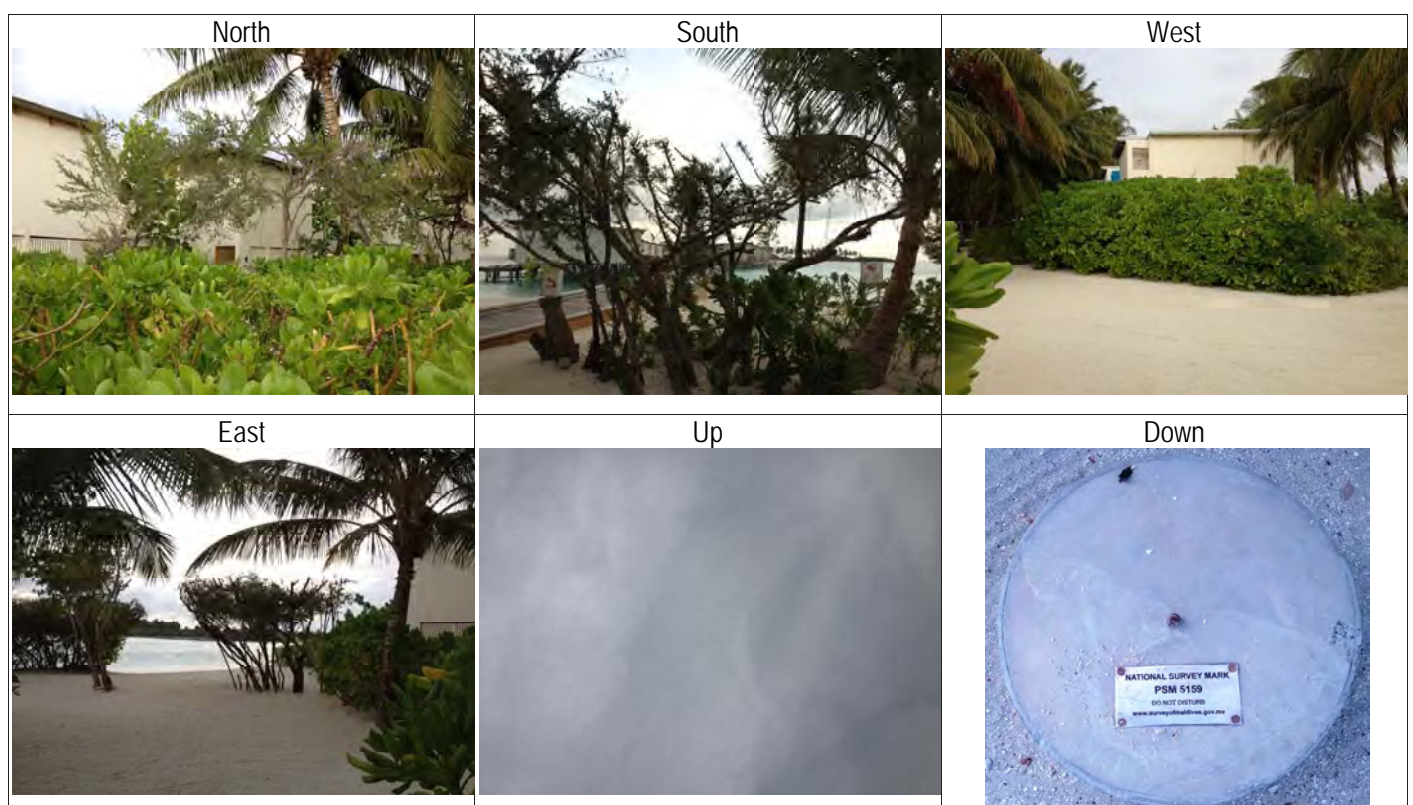
Monument description & method of survey:

- Monument Type A with reference to rural area used as mentioned in the guide line.
- Control stations were fixed using primary closed loop traverse around the island.
- 3 permanently marked station were fixed by GPS

General site condition & access:

Station was fixed in open areas with minimum amount of vegetation and obstacles.

Owner:



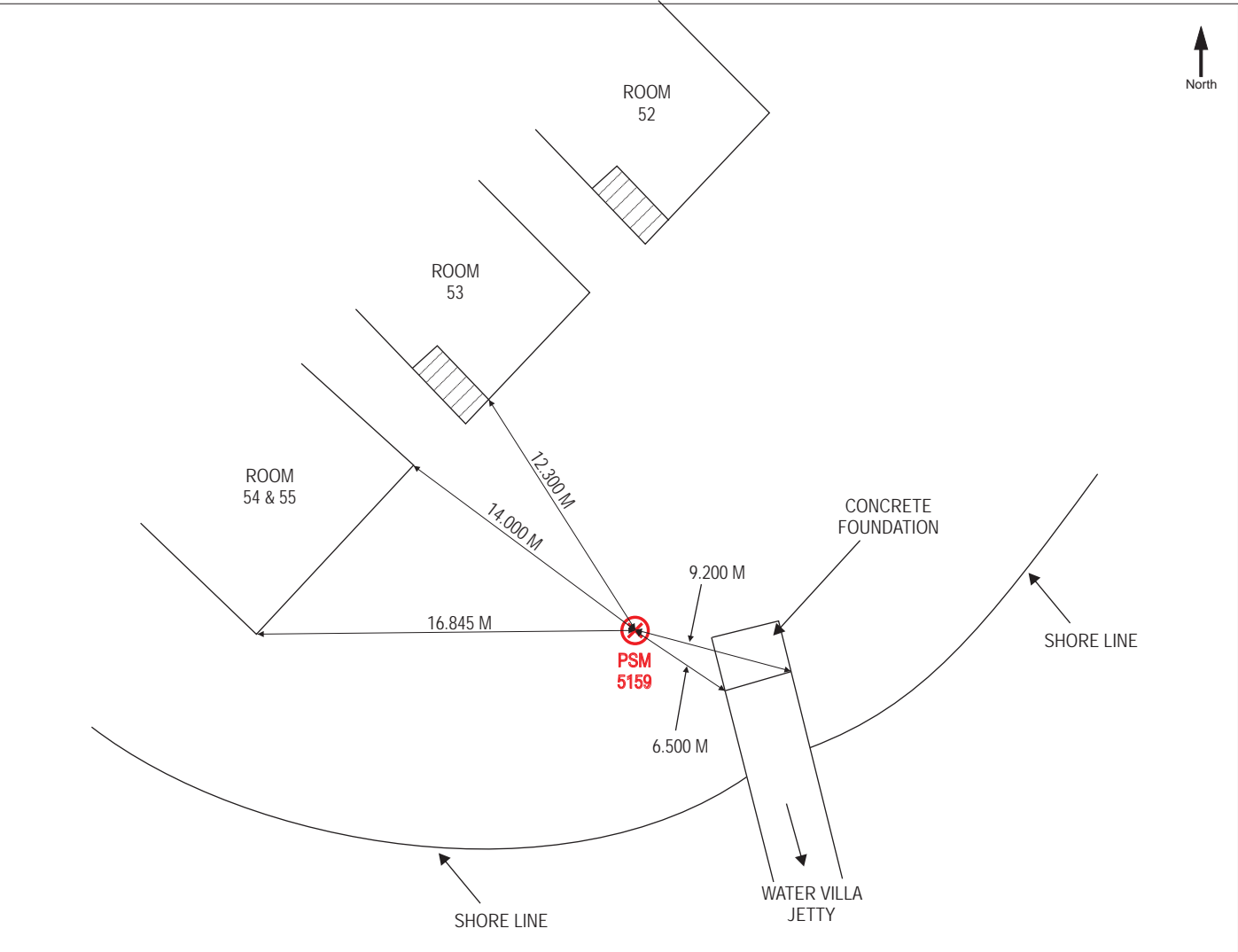
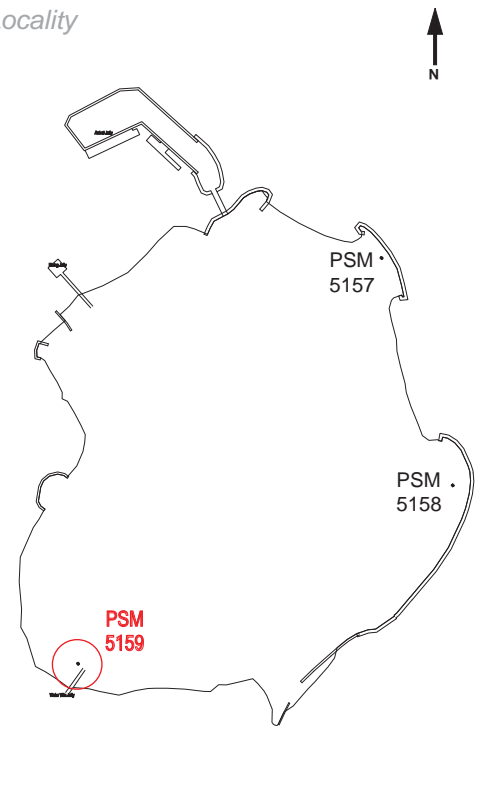
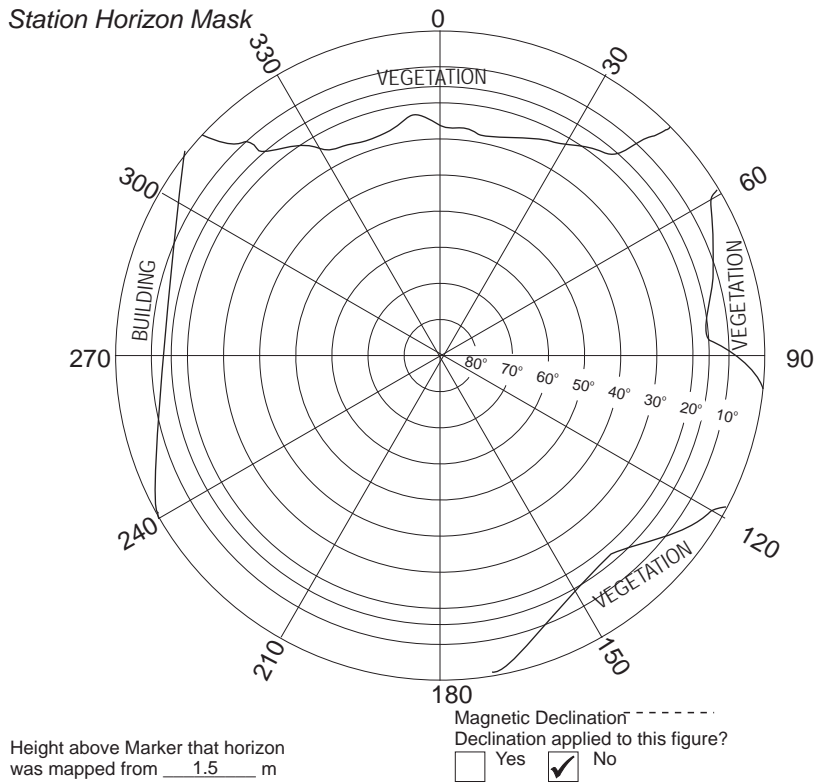
SITE INFORMATION

Station Number

PSM 5159

Station Horizon Mask

Locality



Sketched by: Hussain Thasmeen

Scale: Not to scale

Date: 22 Apr 2012